



# Crime in Oklahoma, 2019

## Selected Findings

July 2020

### Law Enforcement Officers Killed or Assaulted

The Oklahoma Uniform Crime Reporting Program collects data on law enforcement officers killed or assaulted in the line of duty.

According to reporting guidelines, assault on a law enforcement officer includes “any assault or death that occurred while the officer was working in an official capacity (on or off-duty), had full arrest powers, was wearing or carrying a badge and firearm, and was being paid from public funds.”

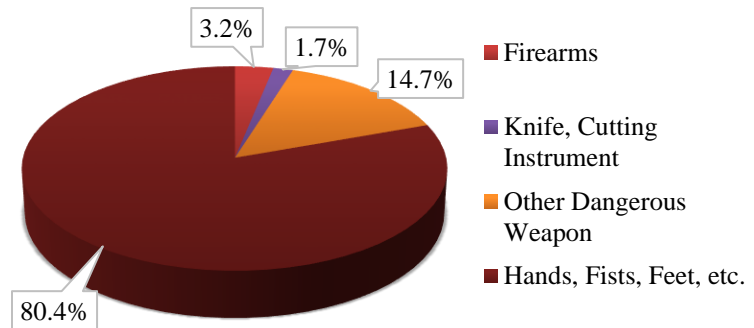
In 2019, Oklahoma law enforcement reported no officers were killed as a result of a felonious act or as a result of an accident or negligence while in the line of duty.

There were 843 reported law enforcement official assaults in 2019. This is a 15.3% decrease from 2018. From 2010-2019, law enforcement officer assaults had an average increase of 0.5% per year. Law enforcement officer assaults had the largest increase in 2016 (14.9%), but they had the largest decrease in 2019, by 15.3% (Figure 2). Law enforcement officers received an injury in 26.8% of the assaults, which is a 2.1% increase from 2018 (Figure 2).

The most common type of weapon (80.4%) used against a law enforcement officer was personal weapons (i.e. hands, fists, feet, etc.) (Figure 1).

The least common weapon type used against a law enforcement officer during an assault was Knife, Cutting Instrument (1.7%). Other weapon types reported included Firearms (3.2%) and Other Dangerous Weapons (14.7%).

Figure 1. Law Enforcement Officer Assaults, by Weapon Type (2019)



The highest number of assaults (111) occurred between the hours of 10:00pm and 12:00am.

Almost half (47.9%) of law enforcement officer assaults occurred between the hours of 4:00 pm- 12:00 am. The least amount of officer assaults were reported between the hours of 6:00 am and 8:00 am (Figure 3).

In almost 50.0% of officer assaults, the officer responded to the incident in an assisted, one-man vehicle (Table 2).

Other common officer assignments include officers responding in a one-man vehicle, alone (24.3%), “Other” assisted (11.3%), and assignment in a two-man vehicle (7.2%). Just over half (64.0%) of officer assaults occurred when the officer was responding to a Disturbance Call (27.2%), Handling, Transporting a Prisoner (19.8%), and All Other (17.0%) (Table 1).

Figure 2. Total Law Enforcement Officer Assaults and Law Enforcement Officer Assaults w/ Injury, 2010-2019

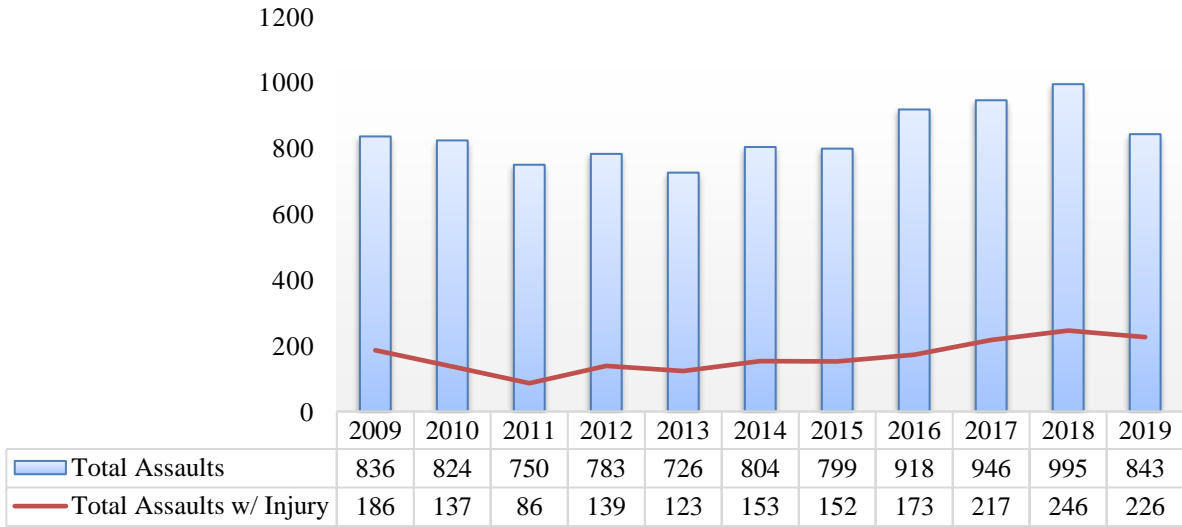


Figure 3. Law Enforcement Officer Assaults, by Time of Day (2019)

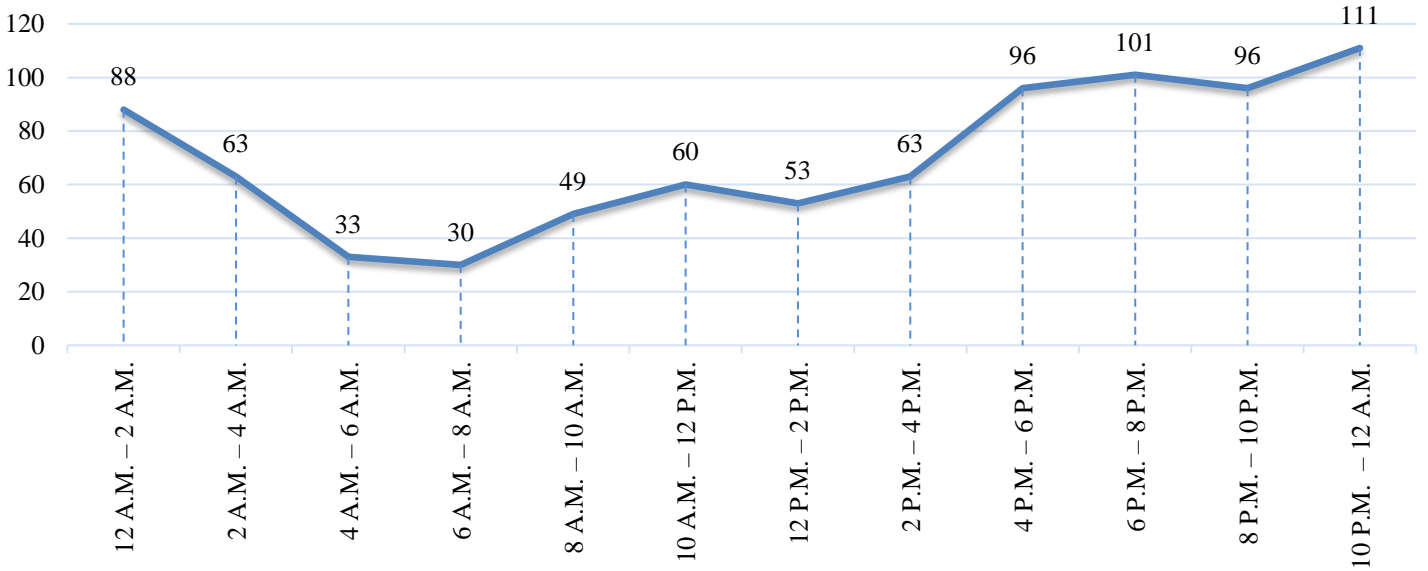


Table 1. Officer Assaults, by Activity, 2017-2019.

Circumstances	Year	Number Assaulted	Percent	% Change
Disturbance Call	2019	229	27.2%	-18.5%
	2018	281	28.2	+0.4
	2017	280	29.6	-4.8
Burglary in Progress	2019	112	1.4	-58.6
	2018	29	2.9	+70.6
	2017	17	1.8	+6.3
Robbery in Progress	2019	1	0.1	-88.9
	2018	9	0.9	+200.0
	2017	3	0.3	0.0
Attempting Other Arrest	2019	92	10.9	+22.7
	2018	75	7.5	+1.4
	2017	74	7.8	-35.1
Civil Disorder	2019	7	0.8	-41.7
	2018	12	1.2	+9.1
	2017	11	1.2	+57.1
Handling, Transporting Prisoner	2019	167	19.8	-5.1
	2018	176	17.7	+0.6
	2017	175	18.5	-1.1
Investigating Suspicious Person or Circumstances	2019	76	9.0	-5.0
	2018	80	8.0	-3.6
	2017	83	8.8	+66.0
Ambush – No Warning	2019	6	0.7	+500.0
	2018	1	0.1	-80.0
	2017	5	0.5	-37.5
Mentally Deranged	2019	23	2.7	-39.5
	2018	38	3.8	+15.2
	2017	33	3.5	+50.0
Traffic Pursuits and Stops	2019	87	10.3	-11.2
	2018	98	9.8	-4.9
	2017	103	10.9	+24.1
All Other	2019	143	17.0	-27.0
	2018	196	19.7	+21.0
	2017	162	17.1	+12.5
<b>Total</b>	<b>2019</b>	<b>843</b>	<b>100.0</b>	<b>-15.3</b>
	<b>2018</b>	<b>995</b>	<b>100.0</b>	<b>+5.2</b>
	<b>2017</b>	<b>946</b>	<b>100.0</b>	<b>+3.1</b>

Table 2. Officer Assignment Information, 2017-2019.

Type Of Assignment		Year	Number Assaulted	Percent	% Change
Two Man Vehicle		2019	61	7.2%	+29.8%
		2018	47	4.7	-7.8
		2017	51	5.4	+2.0
One Man Vehicle	Alone	2019	205	24.3	-10.5
		2018	229	23.0	+26.5
		2017	181	19.1	-12.1
	Assisted	2019	415	49.2	-16.3
		2018	496	49.8	+3.1
		2017	481	50.8	-1.6
Detective	Alone	2019	5	0.6	-44.4
		2018	9	0.9	-43.8
		2017	16	1.7	+220.0
	Assisted	2019	13	1.5	-76.4
		2018	55	5.5	+34.1
		2017	41	4.3	+115.8
Other	Alone	2019	49	5.8	+36.1
		2018	36	3.6	-41.0
		2017	61	6.4	+60.5
	Assisted	2019	95	11.3	-22.8
		2018	123	12.4	+7.0
		2017	115	12.2	+3.6
<b>Total</b>		<b>2019</b>	<b>843</b>	<b>100.0</b>	<b>-15.3</b>
		<b>2018</b>	<b>995</b>	<b>100.0</b>	<b>+5.2</b>
		<b>2017</b>	<b>946</b>	<b>100.0</b>	<b>+3.1</b>